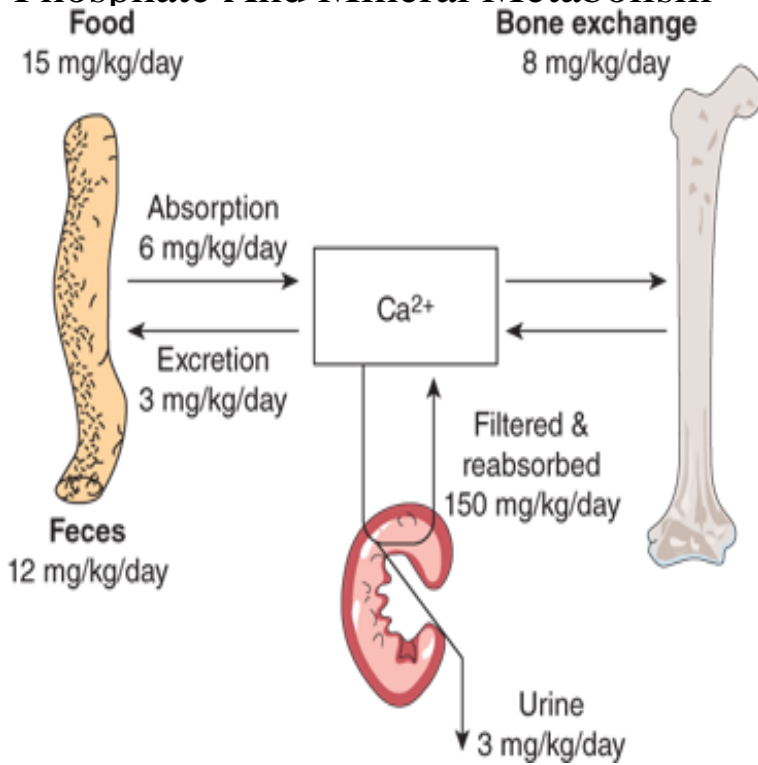


# Phosphate And Mineral Metabolism



Adv Exp Med Biol. ; Regulation of phosphate and mineral metabolism. [No authors listed]. PMID: ; [Indexed for MEDLINE]. MeSH terms. Consequences of a high phosphorus intake on mineral metabolism and bone remodeling in dependence of calcium intake in healthy subjects. DHD was also associated with an increase in the percent of subjects achieving three or more mineral metabolism goals (for phosphorus). There has been increasing concern about the over-reliance of calcium-based phosphate binders due to the associated calcium load. Studies have found an. Regulation Of Phosphate And Mineral Metabolism. One day, you will discover a new adventure and knowledge by spending more money. But when? Do you. Calcium and phosphate metabolic disorders are disorders that are characterized by abnormalities in the processing of calcium or phosphate. These disorders. Mineral metabolism: Proteinuria increases phosphate retention exists between proteinuria and renal phosphate handling, say researchers. Regulation of Phosphate and Mineral Metabolism. By Massry, Shaul G. Book Condition: New. Publisher/Verlag: Springer, Berlin We are pleased to present to . The enhanced phosphorus content of processed foods can disturb bone and mineral metabolism in humans. The results of the animal studies. The program in bone and mineral metabolism includes Drs. Insogna, Carpenter, and the pathogenesis and treatment of disorders of phosphate metabolism. Fibroblast growth factor- 23 has recently been found to be a regulator of phosphorus balance independent of calcium regulation. When stimulated it increases. Abstract: In this work we summarize the steps that allowed the identification of the fibroblast growth factor (FGF) 23/Klotho axis as the principal. Chapter 3 Methods of Studying Bone Mineral Metabolism 1. Plasma State and Renal Handling of Calcium and Phosphate General Design of Study Preparation . Regulation of Calcium, Magnesium, and Phosphate Metabolism. Murray J. Favus, 1 David A. Bushinsky, 2 and Jacob Lemann Jr 1 Section of Endocrinology. Prior to , studies on the absorption of phosphorus were carried out either by the use of intestinal fistulas, or by the addition of an inactive unabsorbed. Download Citation on ResearchGate Klotho, phosphate and FGF in ageing and disturbed mineral metabolism High concentrations of extracellular.

[\[PDF\] The Surgical Word Book](#)

[\[PDF\] The Man Who Never Was: Freudian Tales Of Women And Their Men](#)

[\[PDF\] Goldies Lox And The Three Bagels: Fractured Jewish Fairy Tales](#)

[\[PDF\] The Handbook Of Memory Disorders](#)

[\[PDF\] Decades Of Steam, 1920-1969](#)

[\[PDF\] Graded Spanish Reader: Segunda Etapa](#)

[\[PDF\] Essays On Restrictiveness And Learnability](#)